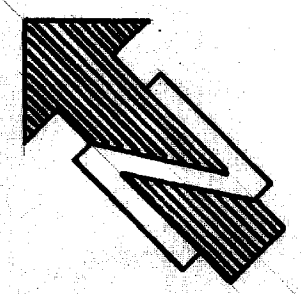


HIGHLAND PARK ADDITION NO. 2

SCALE 1"=100'

1954

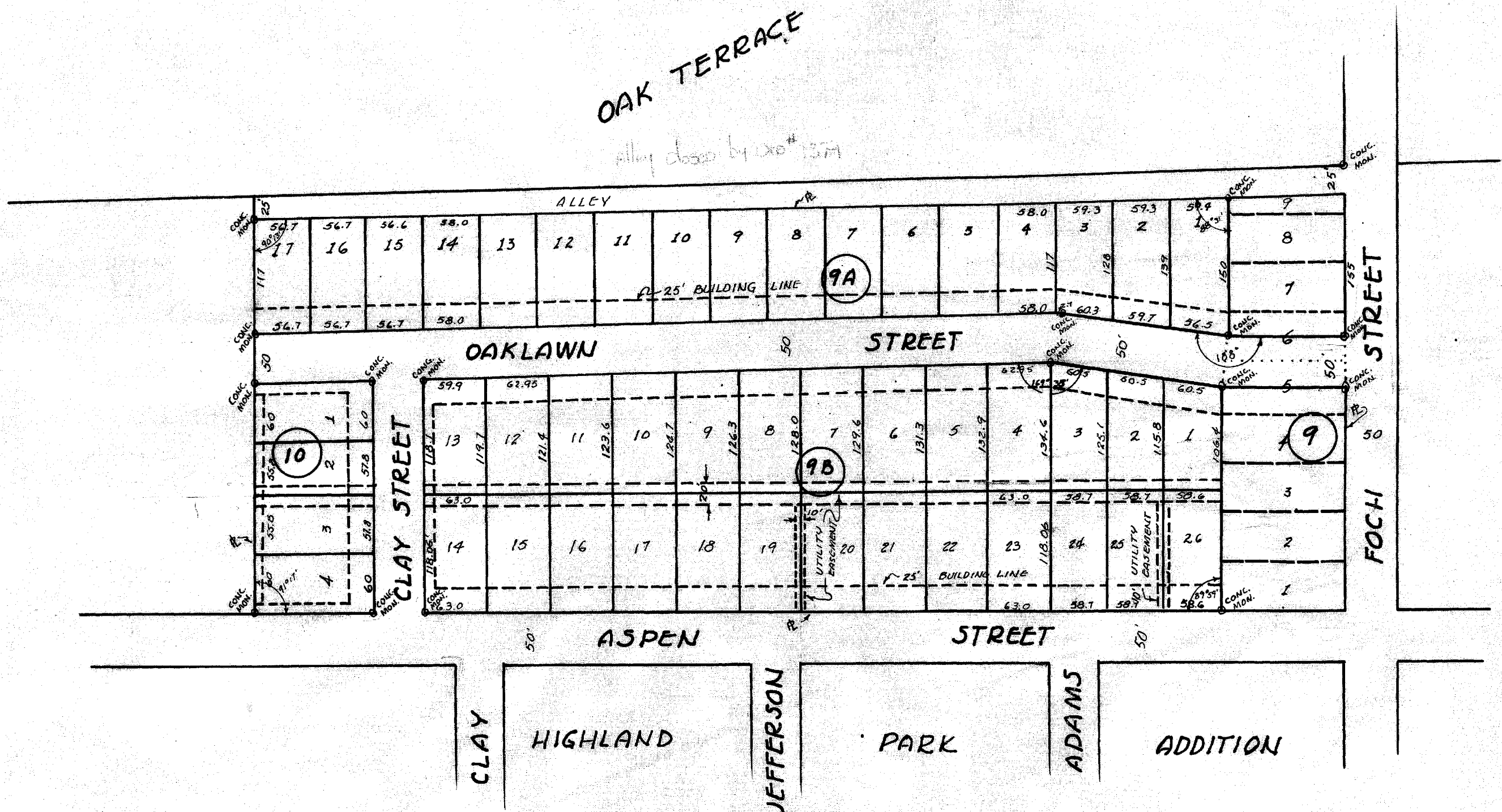
D/R 166 p ~~155~~ 155



HIGHLAND PARK II
1/1/54

OAK TERRACE ADDITION

Alley closed by D/R # 157



on base
up 12/1/54

CLAY HIGHLAND JEFFERSON PARK ADAMS ADDITION